



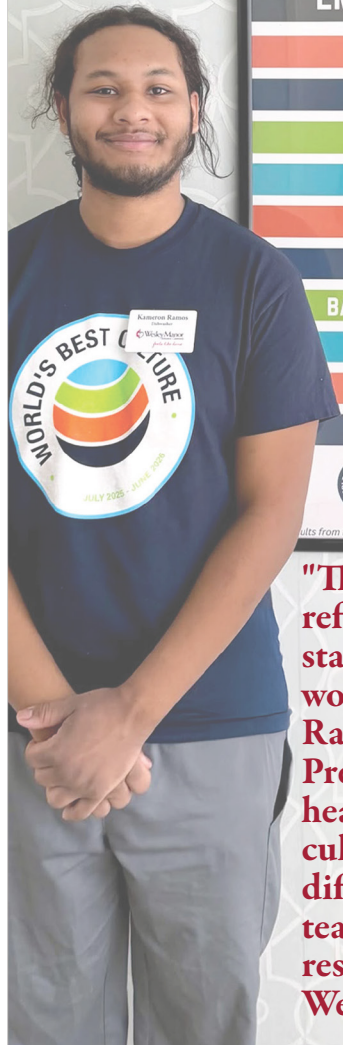
*A Year of Care. A
Future of Promise.*

IMPACT REPORT // FISCAL YEAR
2024 - 2025



Thank you for being part of the community that makes this care possible and for trusting Wesley Manor to steward these resources with intention.

At Wesley Manor Retirement Community, care is more than a service - it is a commitment to dignity, connection, and community at every stage of life. For generations, Wesley Manor has been a place where residents feel supported, families find peace of mind, and dedicated staff bring compassion to their work each day.



"This recognition reflects the heart our staff brings to their work every day," said Ray Dickinson, President & CEO. "A healthy, supportive culture makes all the difference - for our team and for the residents who call Wesley Manor home."

World's Best Culture. *Two Years in a Row.*

For the second consecutive year, Wesley Manor Retirement Community has earned Drive's World's Best Culture Certification, placing our community among top organizations worldwide.

This recognition reflects Wesley Manor's commitment to creating a workplace where employees feel supported, valued, and connected to purpose—an environment that allows residents to experience compassionate, values-centered care every day.

The certification is based on the globally recognized Barrett Values Centre Culture Values Assessment, a research-backed tool supported by more than 25 years of data and over four million culture assessments worldwide. Previous honorees include organizations such as Mastercard, Coca-Cola, Wegmans, PwC, and Volvo.



This renovation will create brighter, more comfortable spaces where residents can live with dignity and where caregivers can provide the very best care.



Scan here to follow progress!



Fiscal Year July 1, 2024 – June 30, 2025

This financial snapshot reflects Wesley Manor's commitment to responsible stewardship of balancing daily operations with thoughtful reinvestment in care, people, and campus improvements.

Revenue: \$13,886,485

Expenses: \$12,321,637

Net Income: \$1,564,848

Net income is reinvested to strengthen care environments, support staff, and prepare the campus for long-term sustainability.

Charitable Care

\$66,922 in charitable care was provided this year through donor generosity, ensuring residents received care and support during times of financial need.

Every charitable gift directly supports residents — reinforcing Wesley Manor's promise that care remains accessible, dignified, and centered on the people who call this community home.

Impact by the Numbers:



153,000+
meals served across our campus this year



2,700+
of activities offered annually to encourage connection and engagement



200+
residents served annually across all levels of care



180
dedicated staff members providing care and support every day



one campus
Multiple levels of care.
Support that adapts as needs change.

Skilled Nursing Renovation *Investing in Care Where It's Needed Most*

The Healthcare Center at Wesley Manor Retirement Community first opened in 1978, and today serves 64 residents who require the highest level of care on our campus.

While other areas of the community have been updated over the years, the Skilled Nursing neighborhood has experienced decades of daily use in spaces essential to both residents and caregivers. Recognizing this need, Wesley Manor's Board of Directors made renovating the Healthcare Center a priority in the community's long-term strategic plan.

What's Changing

Improvements will enhance both the resident experience and the care environment, including:

- + A welcoming covered front entrance with an accessible walkway
- + A refreshed, secure outdoor space for residents and families
- + Additional parking for easier access to the Healthcare Center
- + A relocated nursing station at the front entrance for improved visibility and communication
- + Updated activity areas, dining room, and employee breakroom
- + Expanded space in the secure memory care wing

Looking Ahead

Renovations are scheduled to begin in early March and are projected to take approximately 16 months to complete. Care will continue uninterrupted throughout the process, with thoughtful planning to minimize disruption for residents and families. A dedicated renovation page on the Wesley Manor website will share periodic updates as work progresses — offering transparency and a behind-the-scenes look at how this investment is coming to life.

This renovation reflects Wesley Manor's ongoing commitment to responsible stewardship and to creating spaces that honor the dignity, safety, and wellbeing of every resident - today and for generations to come.

Resident Rooms Designed for Comfort

Resident rooms will be refreshed first, followed by common areas. While rooms will remain semi-private, every effort is being made to maximize comfort, safety, and personal space.

Room updates will include:

- New flooring, paint, and lighting
- Updated bathroom fixtures
- New furniture, including beds, dressers, and bedside tables
- Mounted televisions
- Electrical, security, and infrastructure upgrades These updates will create a more comfortable place to live - and a better environment in which our dedicated staff can provide care.